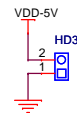
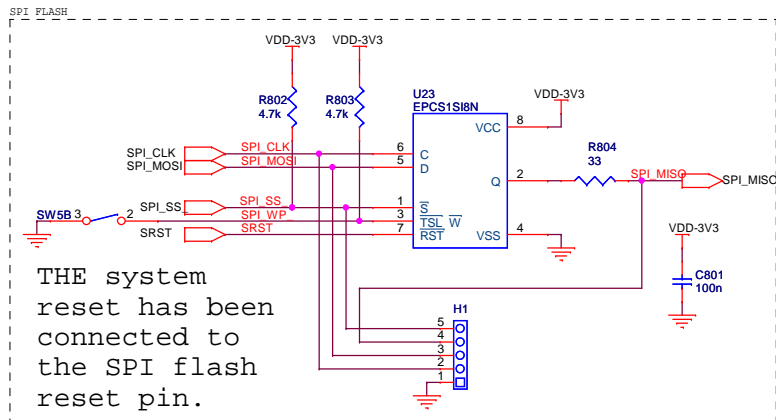
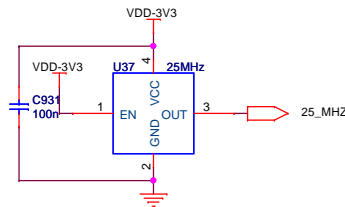
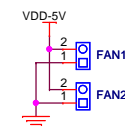
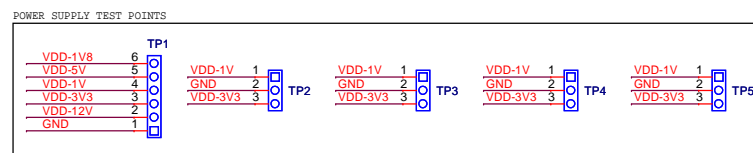
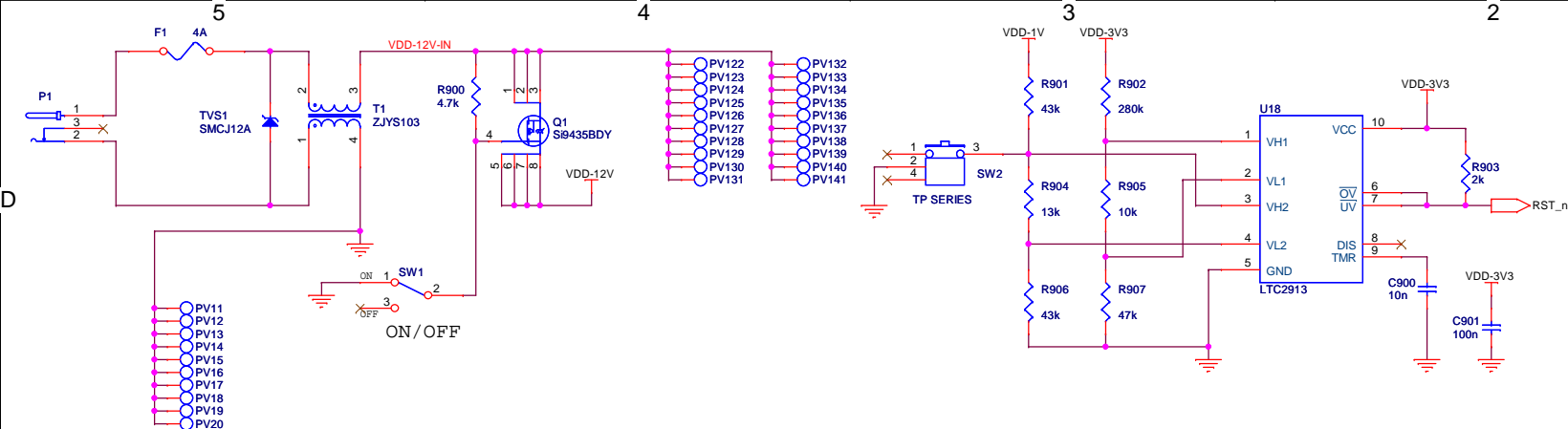


SW5A 1 4

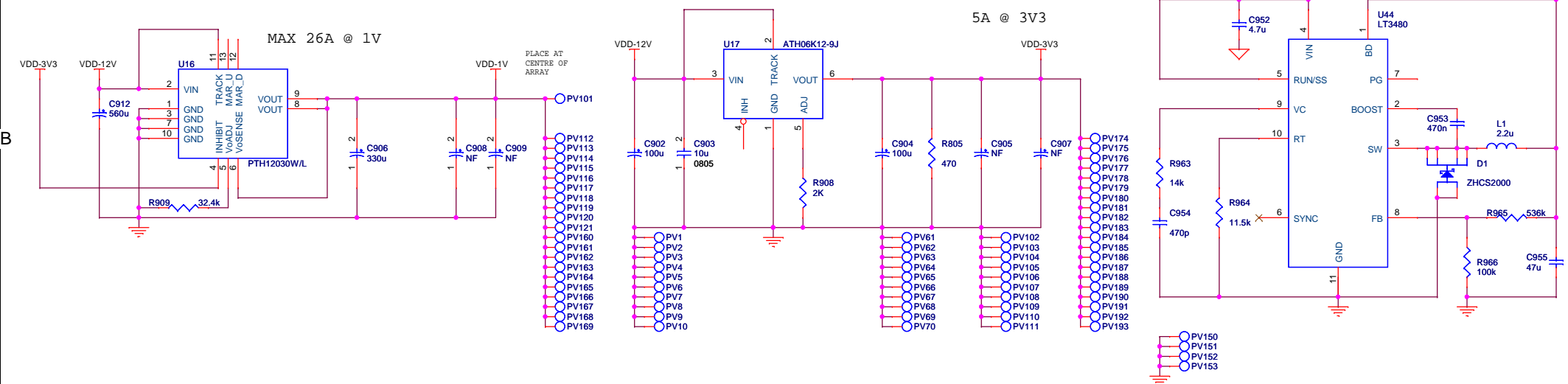


LED HEADER, Place on front of board near the bottom.






5V SUPPLY FOR FAN AND LED HEADER  
MAX 2A @ 5V



⚠ ENSURE POWER nets are suitable width. 0.3mm for high current nets etc.

Schematic: POWER		 ©COPYRIGHT 2009 <a href="http://www.varisys.co.uk">http://www.varisys.co.uk</a>
Title: X MOS XMP-64A		
Rev. 1.0	Date: Friday, February 26, 2010	
Sheet 21	of 22 Document No.: <Doc>	

