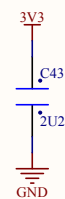
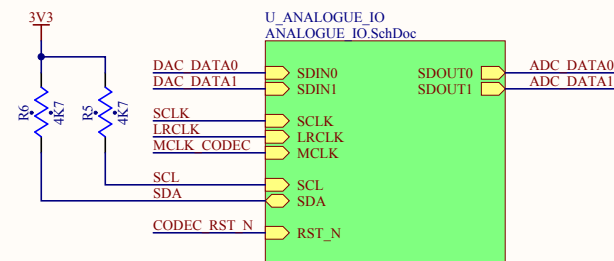
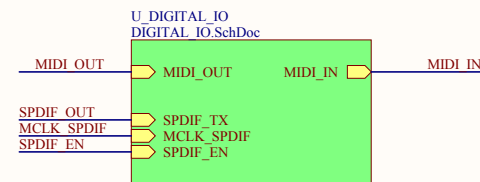
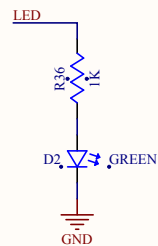
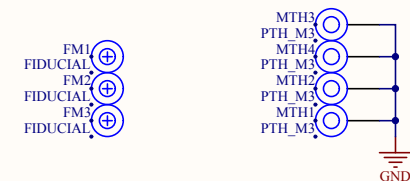


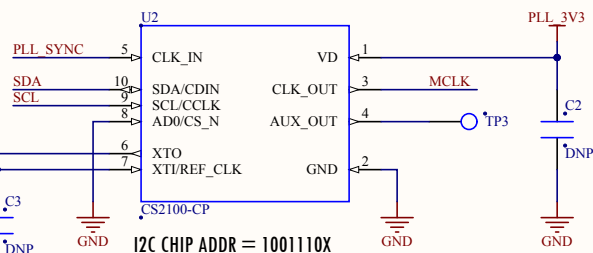
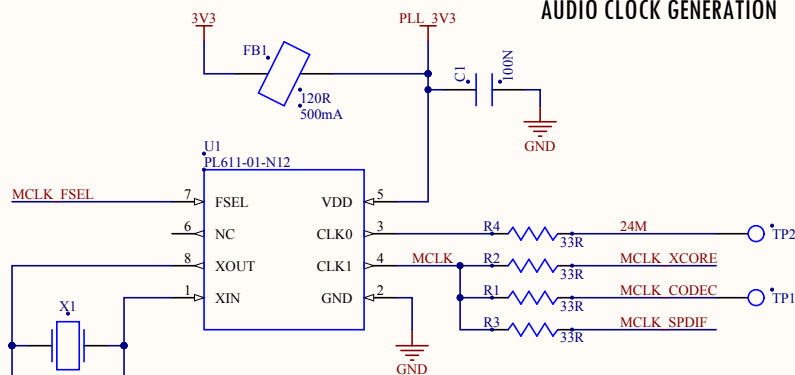
MECH1
NPTH_2MM8



PROD1
PCB FEET 6MM
PROD2
PCB FEET 6MM
PROD3
PCB FEET 6MM
PROD4
PCB FEET 6MM



AUDIO CLOCK GENERATION



OPTION - DO NOT POPULATE

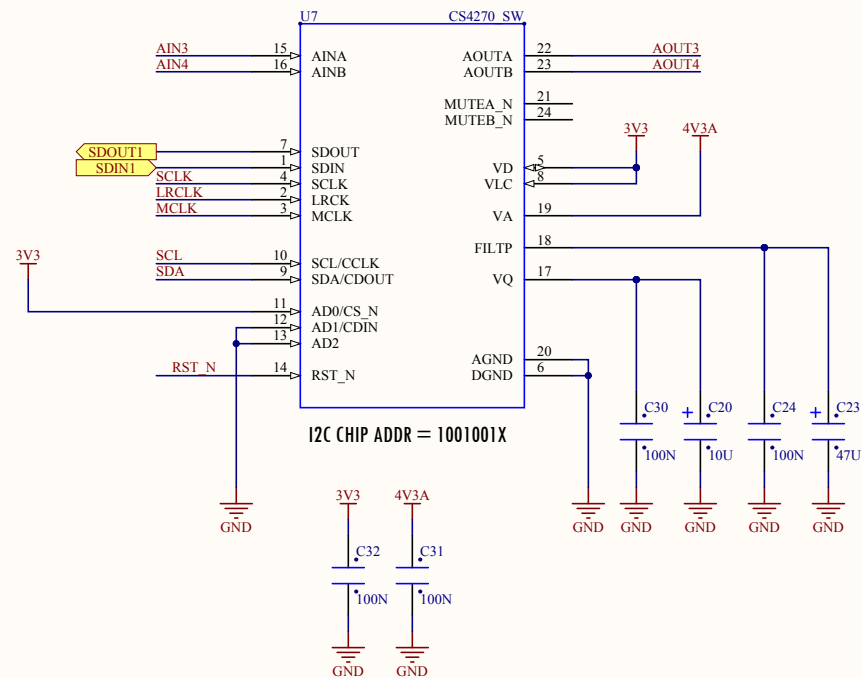
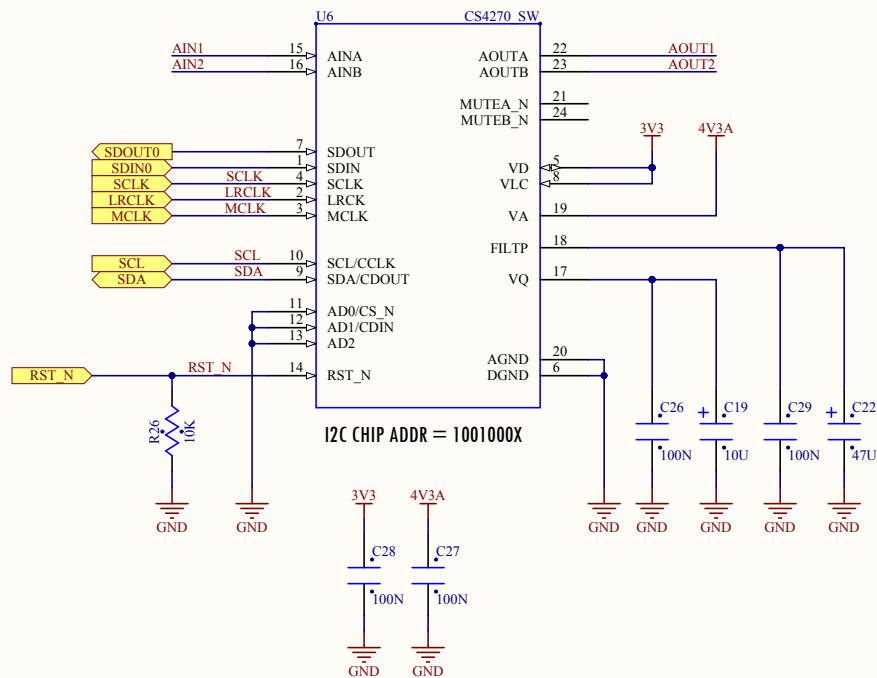
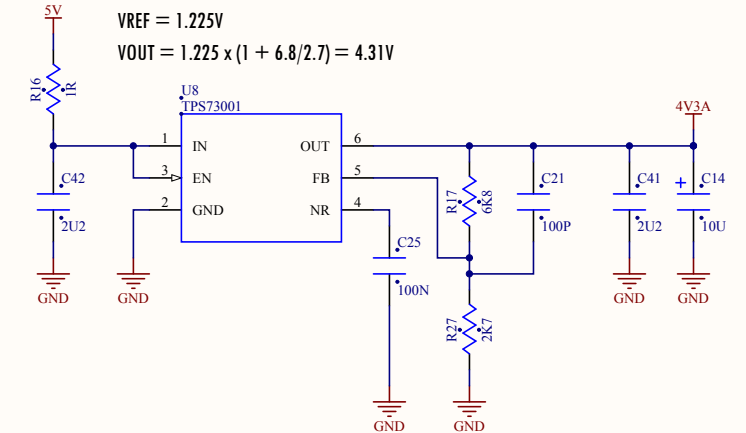
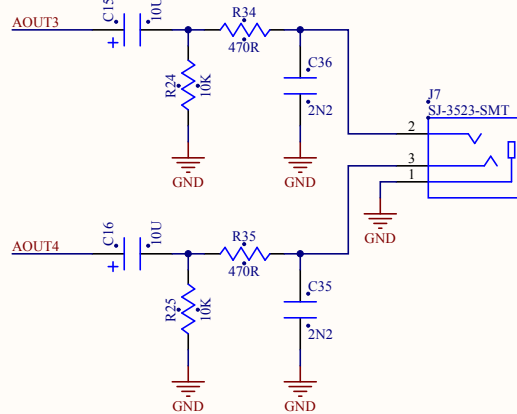
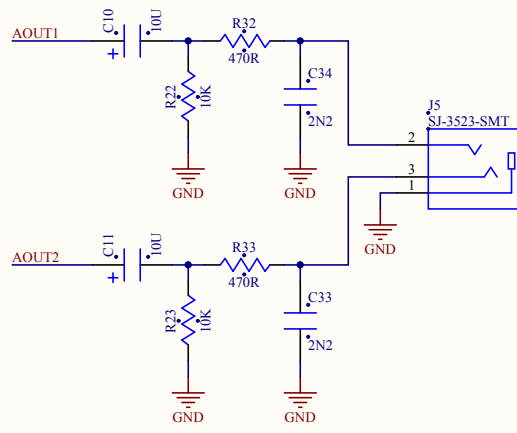
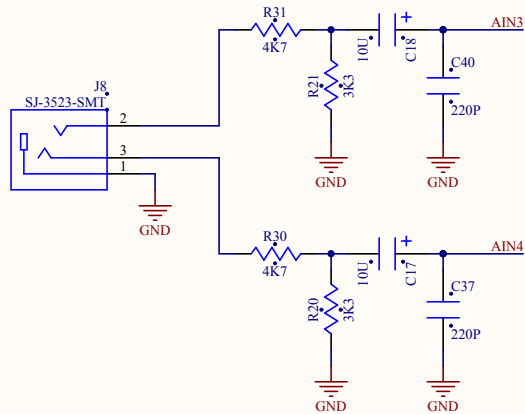
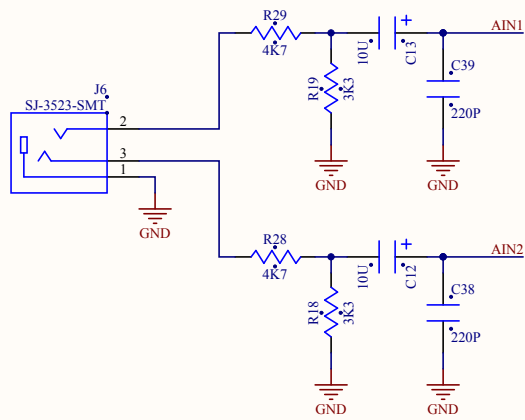
XMOS[®]

Copyright © XMOS Ltd 2012

Project Name

XPCB-057.PrjPCB

| Size | Sheet Name | Rev |
|------|------------|--------------|
| A3 | TOP_LEVEL | 1V1B |
| Date | 24/04/2014 | Sheet 1 of 3 |

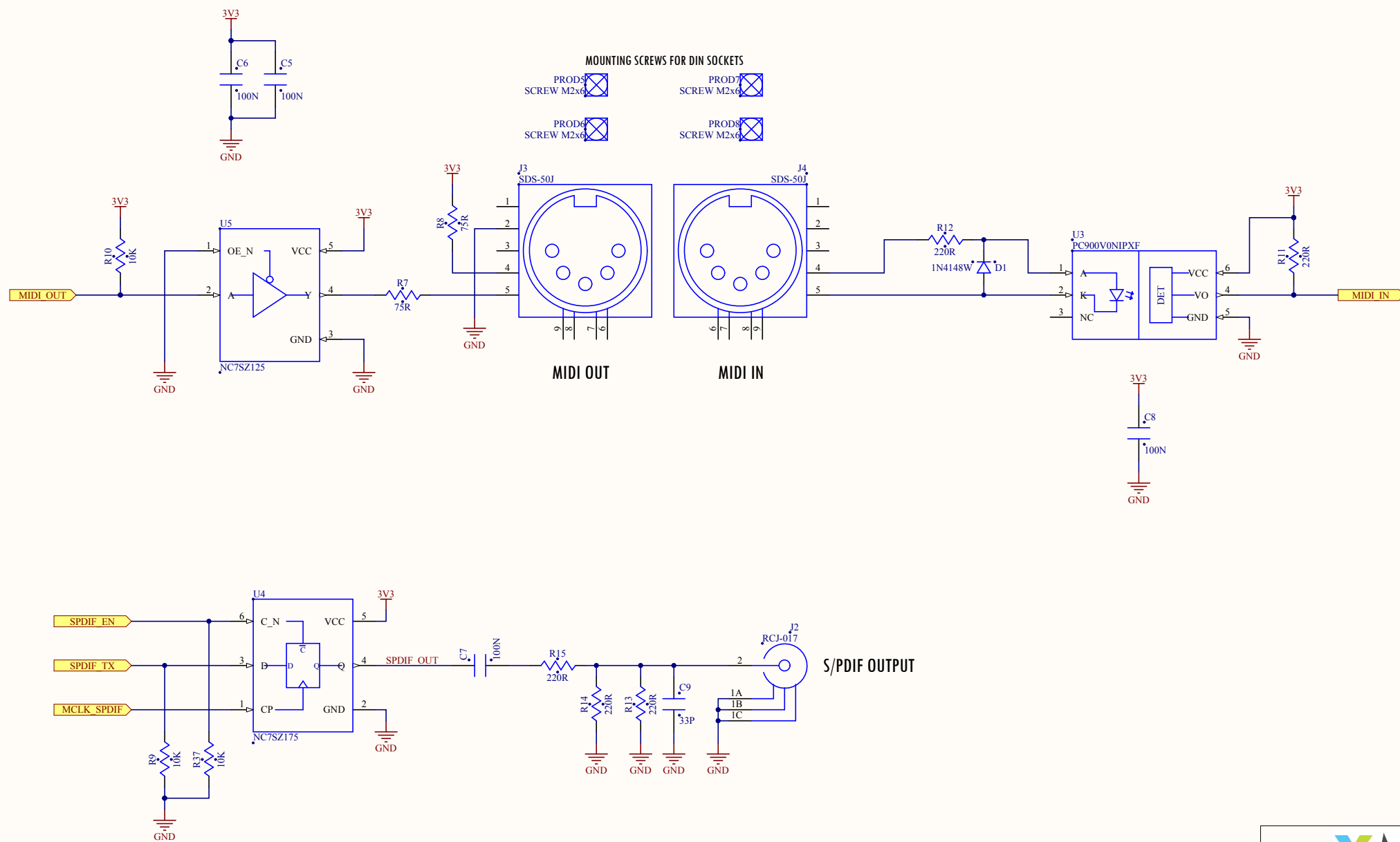


Copyright © XMOS Ltd 2012

Project Name

XPCB-057.PrjPCB

| | | |
|--------------------|---------------------------|---------------|
| Size A3 | Sheet Name ANALOGUE_IO | Rev 1 V1 B |
| Date 24/04/2014 | Sheet 2 of 3 | |



XMOS[®]

Copyright © XMOS Ltd 2012

Project Name

XPCB-057.PrjPCB

| Size | Sheet Name | Rev |
|------|------------|--------------|
| A3 | DIGITAL_IO | 1 V1 B |
| Date | 24/04/2014 | Sheet 3 of 3 |