

# AVB-DC Quick Start Guide

---

## IN THIS DOCUMENT

- ▶ Obtaining the latest firmware
  - ▶ Installing xTIMEcomposer Tools Suite
  - ▶ Importing and building the firmware
  - ▶ Installing the application onto flash memory
  - ▶ Setting up the hardware
  - ▶ Apple Mac OS X Setup
- 

This guide is intended for customers who have purchased the AVB-DC kit based on sliceKIT (XK-SK-AVB-DC). It applies to version 1.0 of the AVB-DC firmware. An AVB-capable Apple Mac running OS X 10.9 Mavericks is required.

## 1 Obtaining the latest firmware

1. Log into [xmos.com](http://xmos.com) and access *My XMOS ▶ Reference Designs*
2. Request access to the *XMOS AVB-DC Software Release* by clicking the *Request Access* link under *AVB DAISY-CHAIN KIT*. An email will be sent to your registered email address when access is granted.
3. A *Download* link will appear where the *Request Access* link previously appeared. Click and download the firmware zip.

## 2 Installing xTIMEcomposer Tools Suite

The AVB-DC software requires xTIMEcomposer version 13.0.0 or greater. It can be downloaded at the following URL

- ▶ <https://www.xmos.com/en/support/downloads/xtimecomposer>

## 3 Importing and building the firmware

To import and build the firmware, open xTIMEcomposer Studio and follow these steps:

1. Choose *File ▶ Import*.
2. Choose *General ▶ Existing Projects into Workspace* and click **Next**.
3. Click **Browse** next to 'Select archive file' and select the firmware .zip file downloaded in section 1.

4. Make sure that all projects are ticked in the *Projects* list.
5. Click **Finish**.
6. Select the `app_daisy_chain` project in the Project Explorer and click the **Build** icon in the main toolbar.

## 4 Installing the application onto flash memory

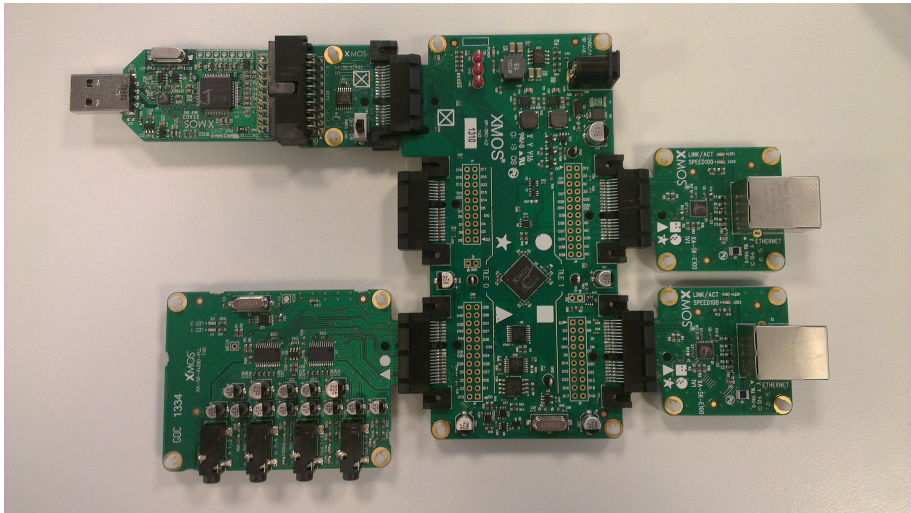
1. Connect the xTAG-2 debug adapter (XA-SK-XTAG2) to the first sliceKIT core board.
2. Connect the xTAG-2 to the debug adapter.
3. Plug the xTAG-2 into your development system via USB.
4. Plug in the 12V power adapter and connect it to the sliceKIT core board.
5. In xTIMEcomposer, right-click on the binary within the `app_daisy_chain/bin` folder of the project.
6. Choose *Flash As ► Flash Configurations*.
7. Double click *xCORE Application* in the left panel.
8. Choose *hardware* in *Device options* and select the relevant xTAG-2 adapter.
9. Click on **Apply** if configuration has changed.
10. Click on **Flash**. Once completed, disconnect the power from the sliceKIT core board.
11. Repeat steps 1 through 8 for the second sliceKIT.

## 5 Setting up the hardware

Refer to Figure 1 for the correct setup of the I/O sliceCARDS to the sliceKIT core boards.

1. The Ethernet sliceCARDS (XA-SK-E100) must be inserted into the slots denoted by the Circle and Square symbols.
2. The audio sliceCARD (XA-SK-AUDIO-PLL) must be inserted into the slot denoted by the Triangle symbol.
3. Connect the two sliceKITs together using an Ethernet cable between either of the Ethernet ports.
4. Connect one of the remaining Ethernet ports to an AVB-capable Apple Mac running OS X 10.9 Mavericks.
5. Connect the provided 12V power supplies to the input power jacks of the boards and power them on.

**Figure 1:**  
XK-SK-AVB-  
DC

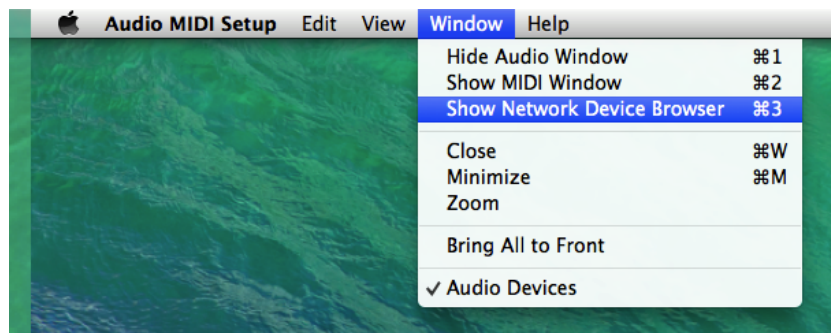


## 6 Apple Mac OS X Setup

All Apple Macs with a Thunderbolt port are AVB capable.

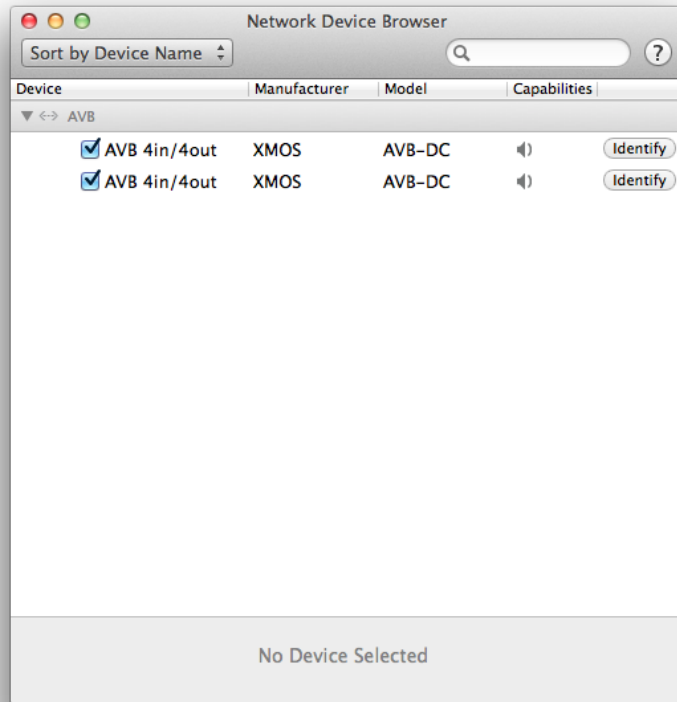
To enumerate and stream audio between a Mac and XMOS AVB-DC endpoints:

1. Install/upgrade to OS X Mavericks Version  $\geq 10.9$
2. Connect the XMOS AVB daisy chain to the Mac via the Ethernet port or Thunderbolt Ethernet adapter.
3. Open the *Audio MIDI Setup* utility.
4. In the menu bar, select *Window* ► *Show Network Device Browser*.

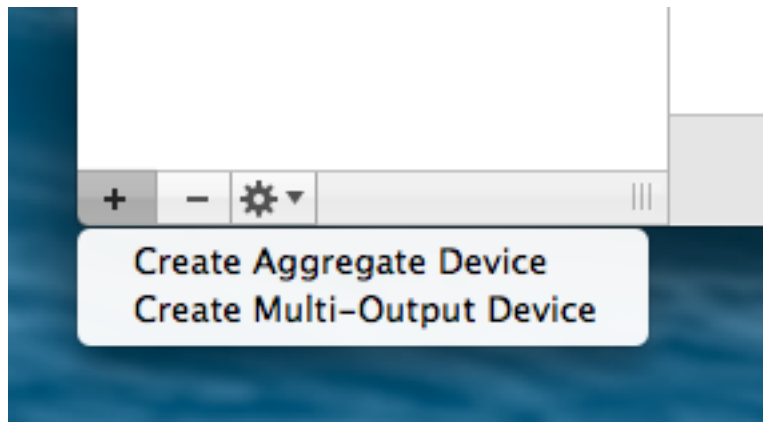


5. XMOS AVB-DC endpoints will enumerate in this list as *AVB 4in/4out*. Select the checkbox to the left of the entries to connect the devices. Pressing the *Identify*

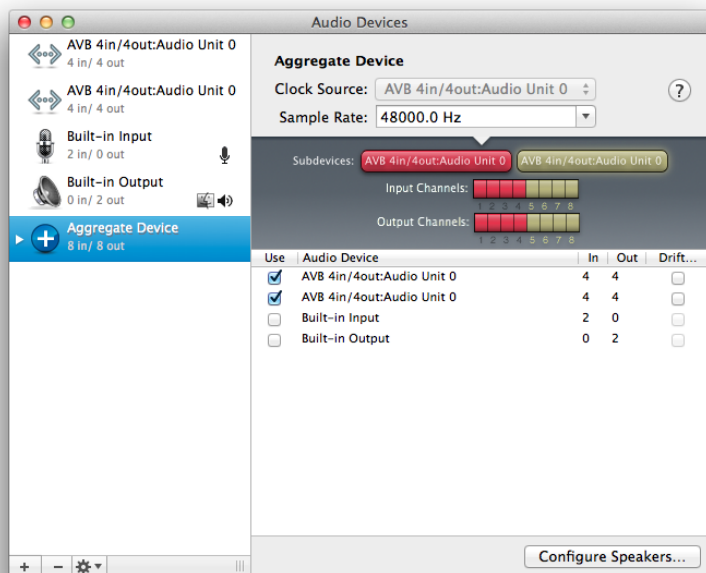
button will identify the particular device by lighting LED1 and LED2 on the audio sliceCARD.



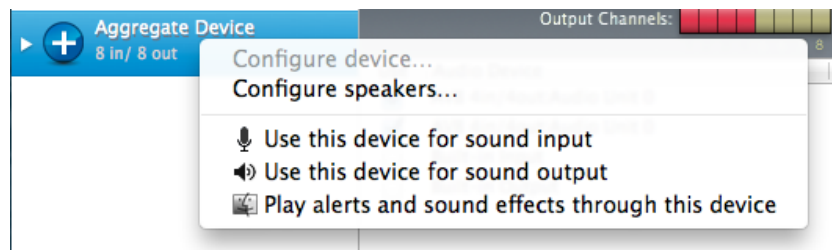
6. On successful connection, the devices will appear as Audio Devices in the *Audio MIDI Setup* window.
7. The devices can be streamed to individually, aggregated as an 8in/8out device, or treated as a Multi-Output Device. Aggregate or Multi-Output devices can be created in the Audio MIDI Setup window by clicking on the plus in the bottom left corner.



8. Once created, an Aggregate or Multi-Output device can be configured to use the XMOS AVB-DC endpoints by selecting the 'Use' checkboxes beside the Audio Devices.



9. To enable audio streaming to/from a device, right click on the device in the left pane and select *Use this device for sound input* and *Use this device for sound output*.



10. Audio can now be played and recorded via the endpoints.



Note: Volume and sample rate control of AVB audio devices is not currently available via Audio MIDI Setup



Copyright © 2014, All Rights Reserved.

Xmos Ltd. is the owner or licensee of this design, code, or Information (collectively, the "Information") and is providing it to you "AS IS" with no warranty of any kind, express or implied and shall have no liability in relation to its use. Xmos Ltd. makes no representation that the Information, or any particular implementation thereof, is or will be free from any claims of infringement and again, shall have no liability in relation to any such claims.