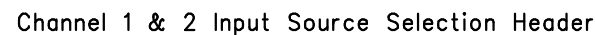


ECO #	REV	DESCRIPTION	INC BY DATE	CHK BY DATE

Sheet #	Sheet Title
1	Title Sheet
2	XS1-L2
3	Ethernet
4	Audio Input/Output
5	PLL
6	Switches, LEDs, Headers
7	Power

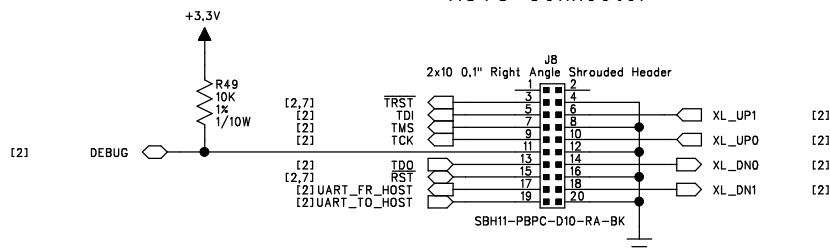
<div>ATTEROTECH™</div>			
PROJECT TITLE		XMOS – AVB Demo Board	
SHEET TITLE		Title Sheet	
PART #	600-00139-01-B	DOC REV	2.0
DRAWN BY	ALR	ENGINEER	ALR
DATE	11/30/10	SIZE C	SHEET 1 OF 7

U1-A  
XS1-L02A-QF124-C5



ADC: install shunt  
Expansion Header: remove shunt

U1-B  
YS1-I 02A-0F124-C5

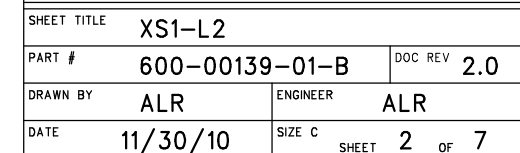


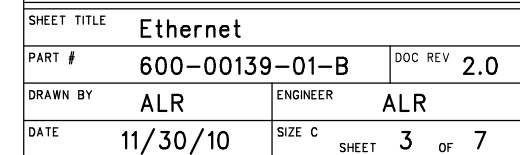
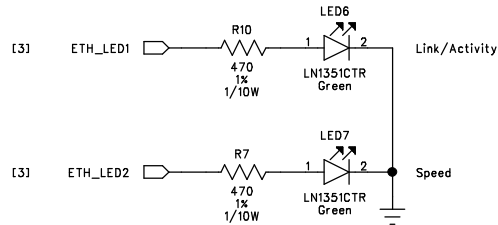
The schematic diagram illustrates the power supply circuit for the U1-D module. A +1V input is connected to a series of capacitors: C38 (4.7µF, 6.3V, 10%), C40 (0.1µF, 10V, 10%), C41 (0.1µF, 10V, 10%), C42 (0.1µF, 10V, 10%), and C43 (0.01µF, 10V, 10%). The output of this network is connected to the VDD pins of the U1-D module (X51-L02A-QF124-C5). The module also has GND and PAV pins connected to ground.

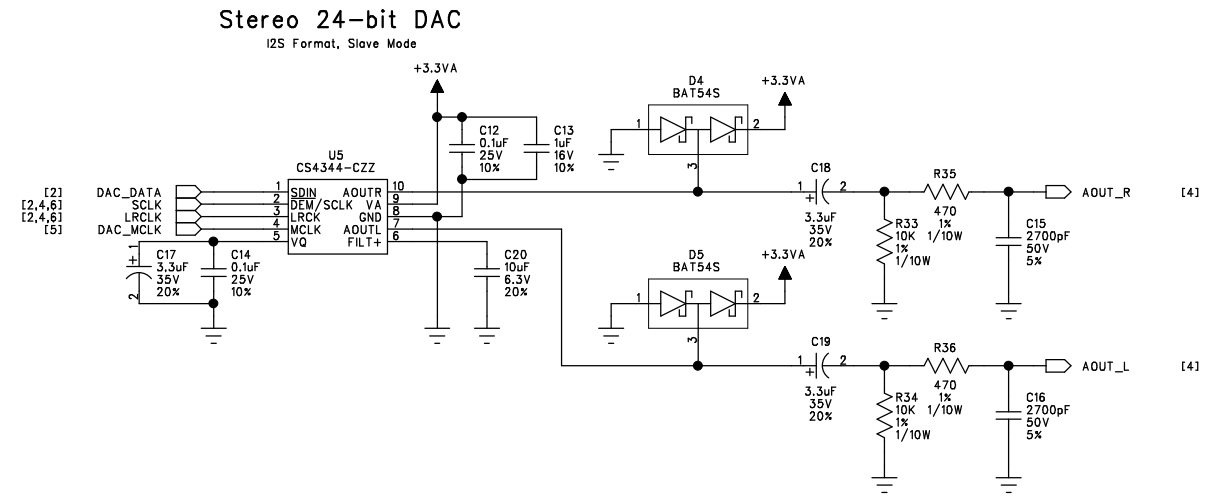
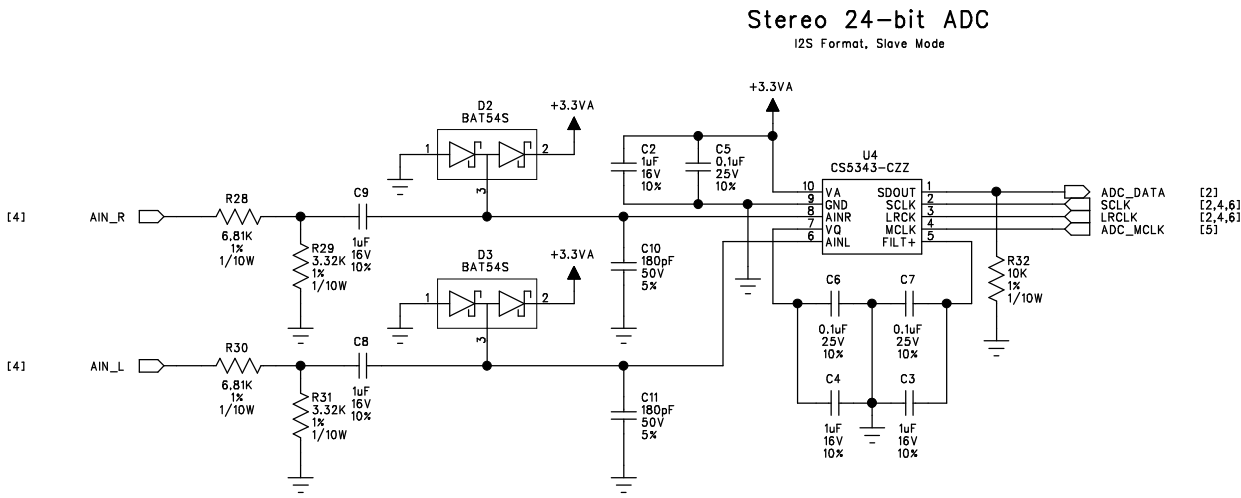
Diagram illustrating the pin connections for the XMC2800 module (U1-F, XS1-L02A-QF124-C5). The module is connected to a power supply (+3.3V and +1V) and a clock source (XMC2800 module).

Pin connections shown:

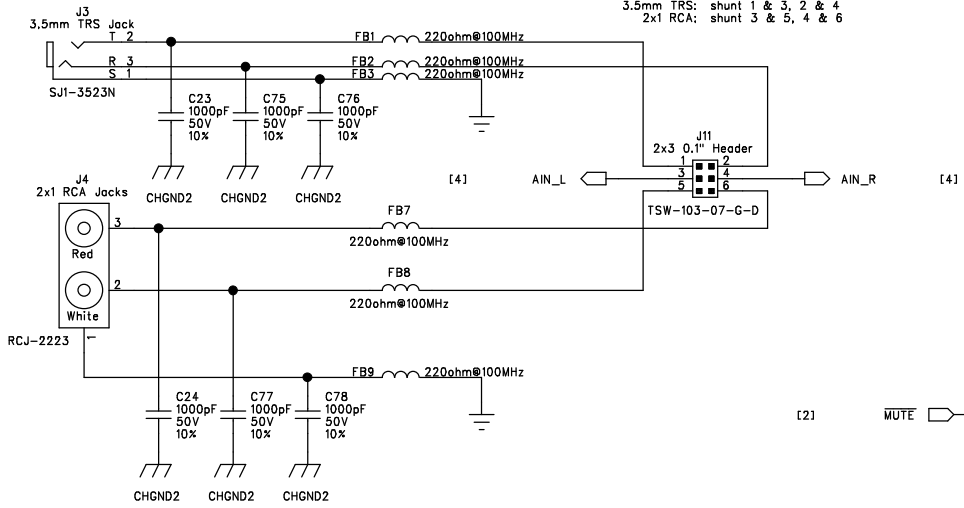
- Pin 85: +3.3V
- Pin 86: +1V
- Pin 87: PCU\_VDD
- Pin 88: PCU\_VDDIO
- Pin 89: PCU\_WAKE
- Pin 90: PCU\_CLK
- Pin 91: PCU\_GATE
- Pin 92: B3
- Pin 93: B3
- Pin 94: B3
- Pin 95: B3
- Pin 96: B3



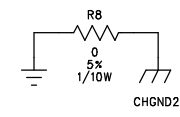




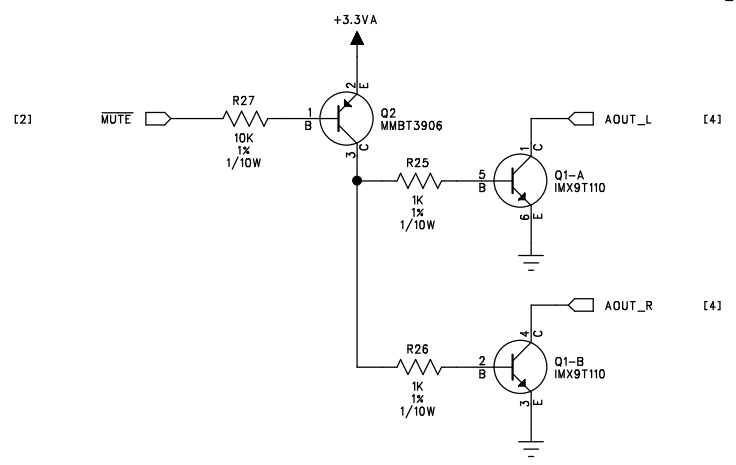
Stereo Audio Input Jacks



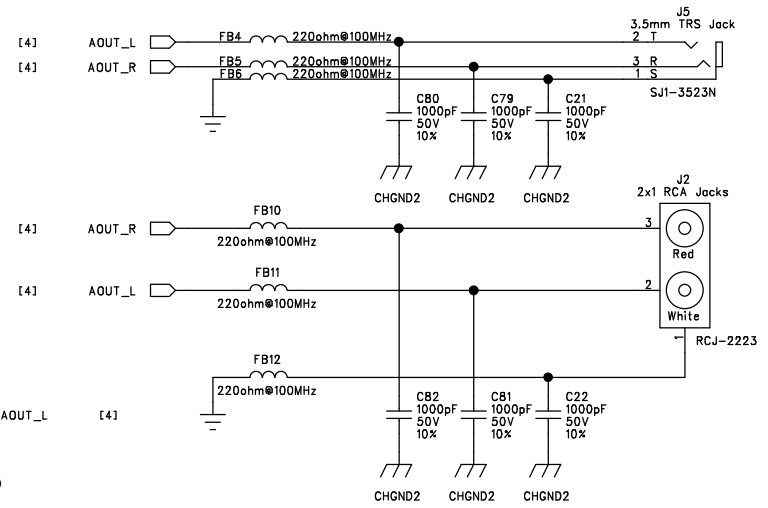
Input Jack Selection Header



Audio Output Muting

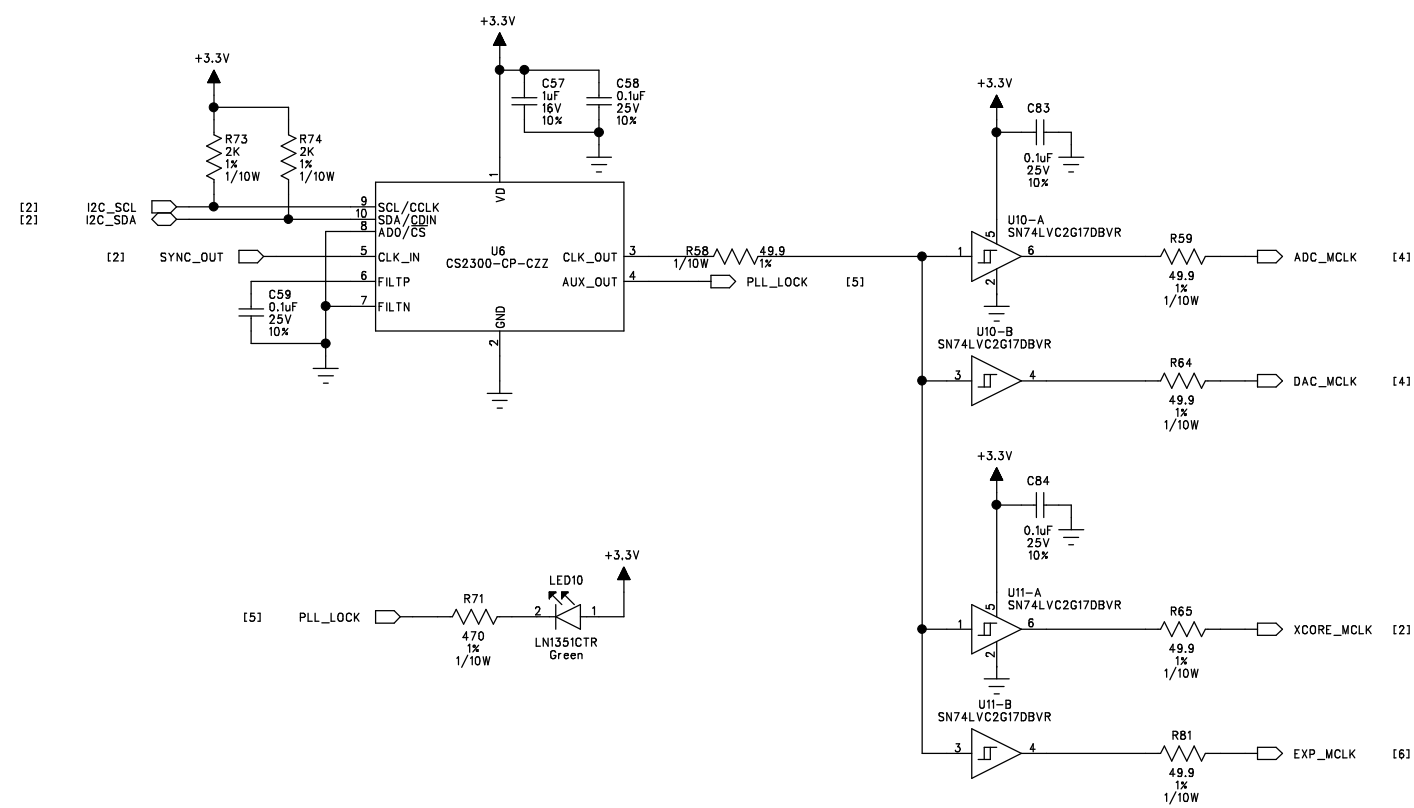


Stereo Audio Output Jacks

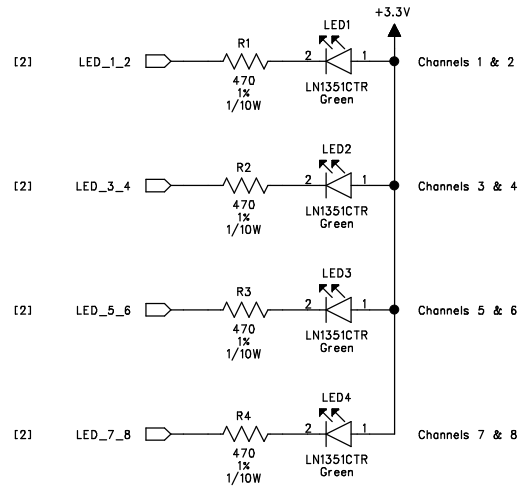
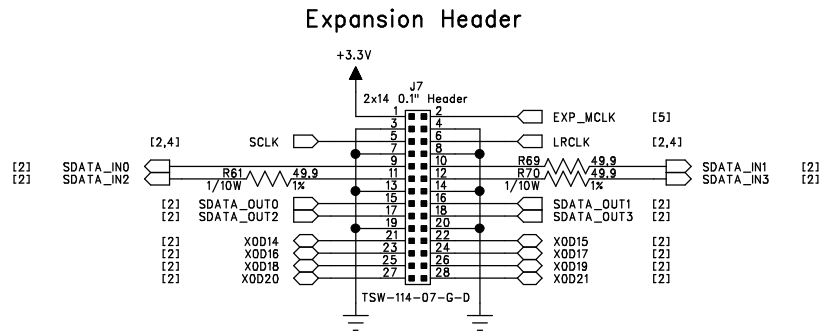
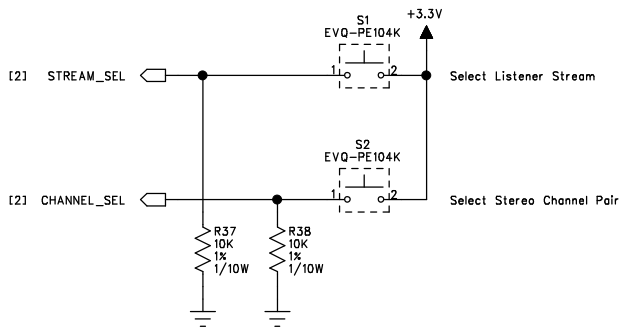
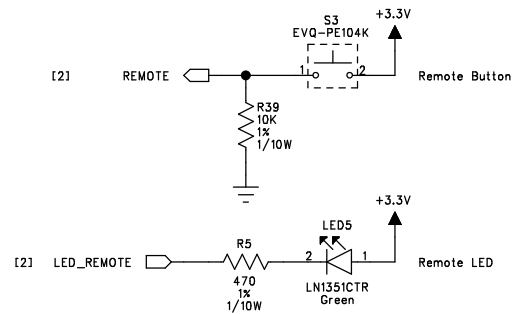


SHEET TITLE			Audio Input/Output	
PART #	600-00139-01-B	DOC REV	2.0	
DRAWN BY	ALR	ENGINEER	ALR	
DATE	11/30/10	SIZE C	SHEET 4 OF 7	

Fractional-N Clock Multiplier w/ LCO

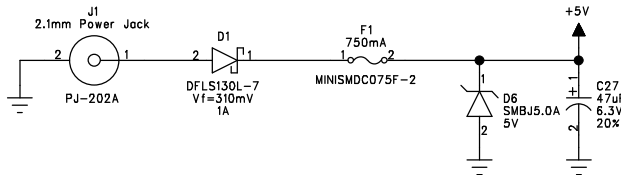


SHEET TITLE PLL		
PART #	600-00139-01-B	DOC REV 2.0
DRAWN BY	ALR	ENGINEER ALR
DATE	11/30/10	SIZE C SHEET 5 OF 7

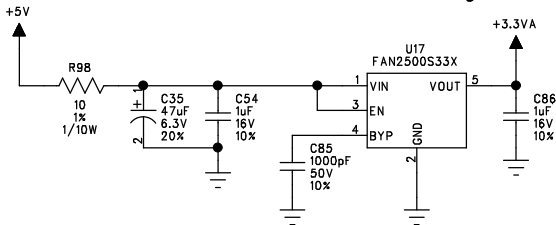


SHEET TITLE			Switches, LEDs, Headers		
PART #		600-00139-01-B		DOC REV	2.0
DRAWN BY		ALR		ENGINEER	
DATE		11/30/10		SIZE C	
				SHEET 6 OF 7	

Power Input

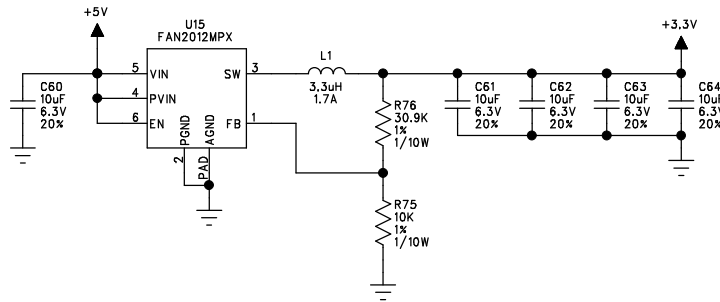


100mA LDO Regulator



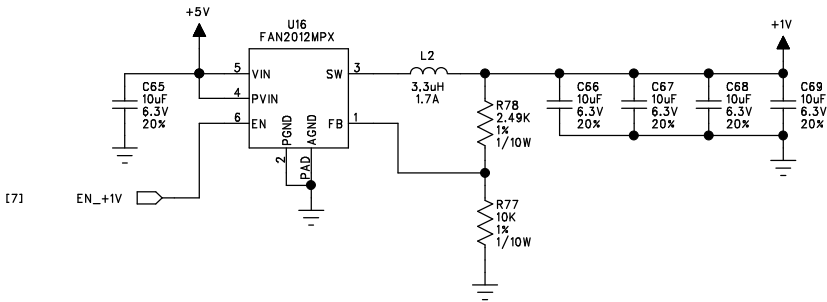
1.5A Switching Regulator

Frequency: 1.3MHz



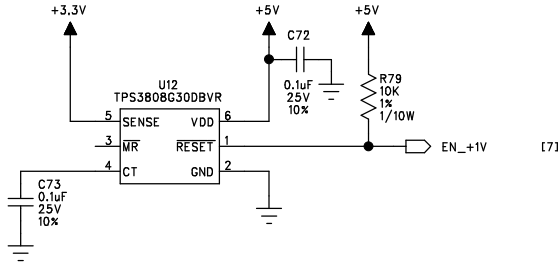
1.5A Switching Regulator

Frequency: 1.3MHz



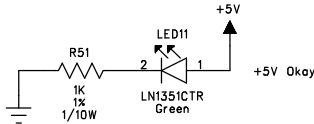
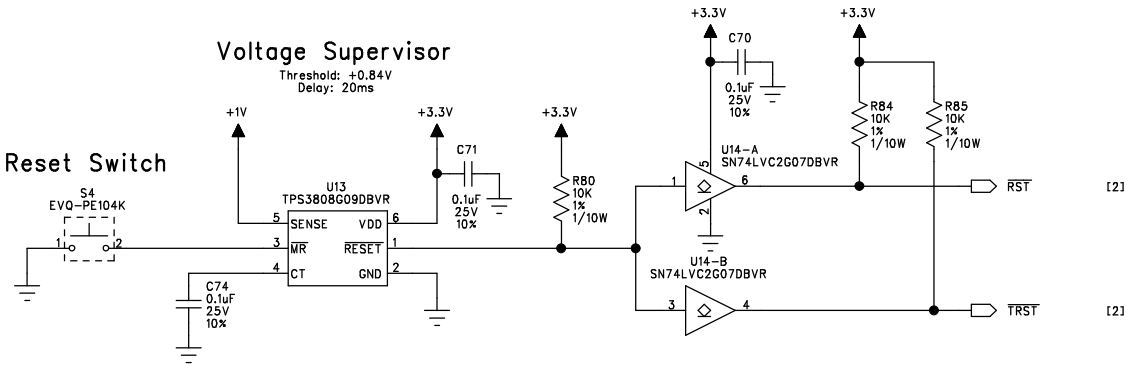
Voltage Supervisor

Threshold: +2.79V  
Delay: 20ms



Voltage Supervisor

Threshold: +0.84V  
Delay: 20ms



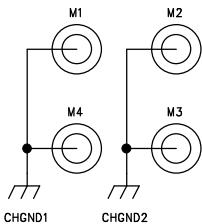
PCB Fiducials

31mil Copper, 62mil Solder Mask

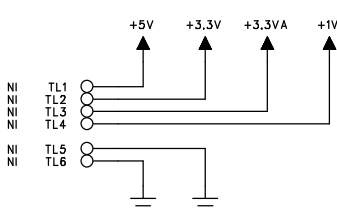


Mounting Holes

3.2mm Drill



Test Loops



SHEET TITLE <b>Power</b>		
PART #	<b>600-00139-01-B</b>	DOC REV <b>2.0</b>
DRAWN BY	<b>ALR</b>	ENGINEER <b>ALR</b>
DATE	<b>11/30/10</b>	SIZE C SHEET <b>7</b> OF <b>7</b>